

Laundry Helper Hugbot

Supplies you'll need



cardboard



scissors



glue



crayons



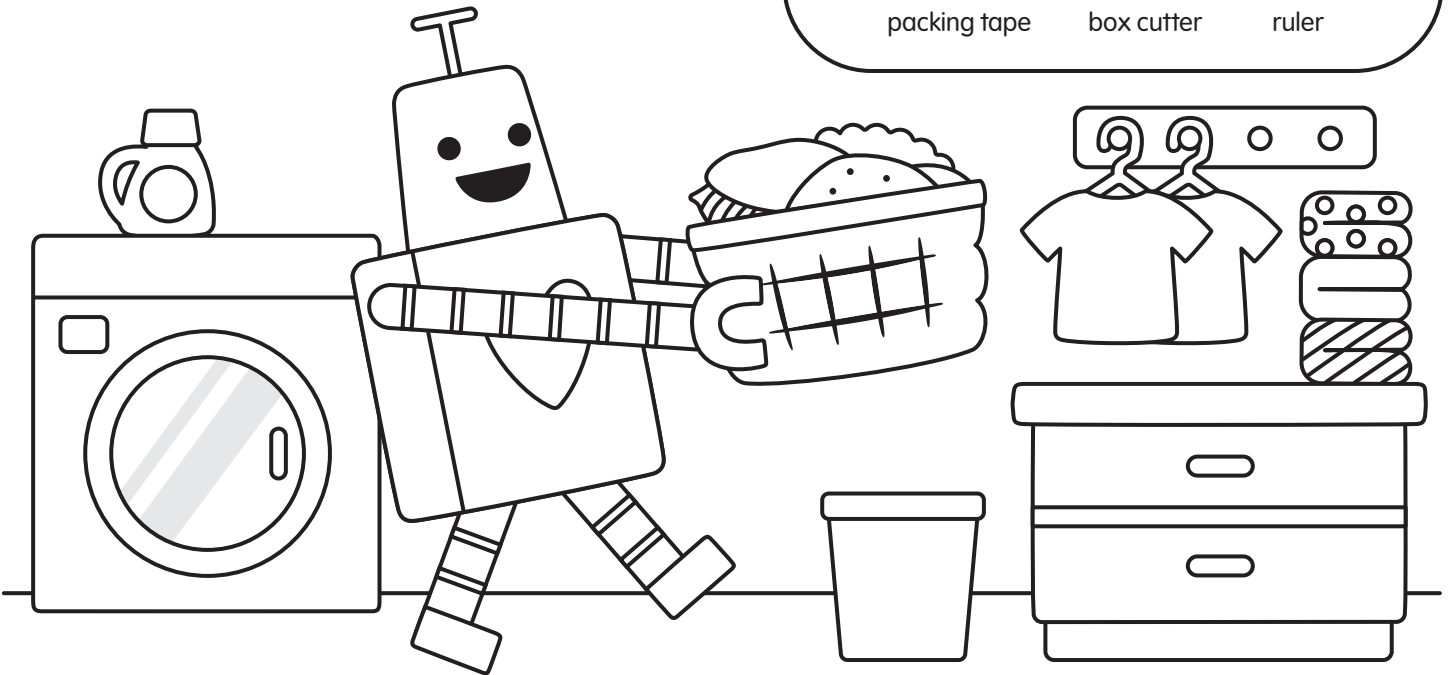
packing tape



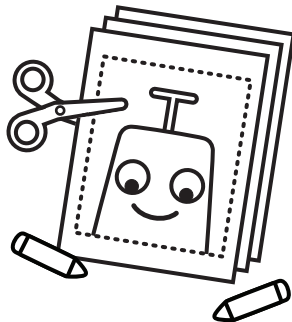
box cutter



ruler



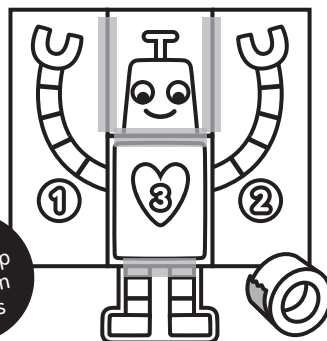
Instructions



1. Color, cut and glue

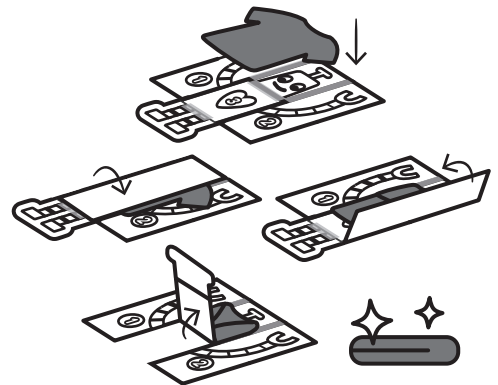
Print out the sheets, color, and cut out panels along the dotted line. Glue arm panels together.

Leave 0.25" gap between panels



2. Assemble together

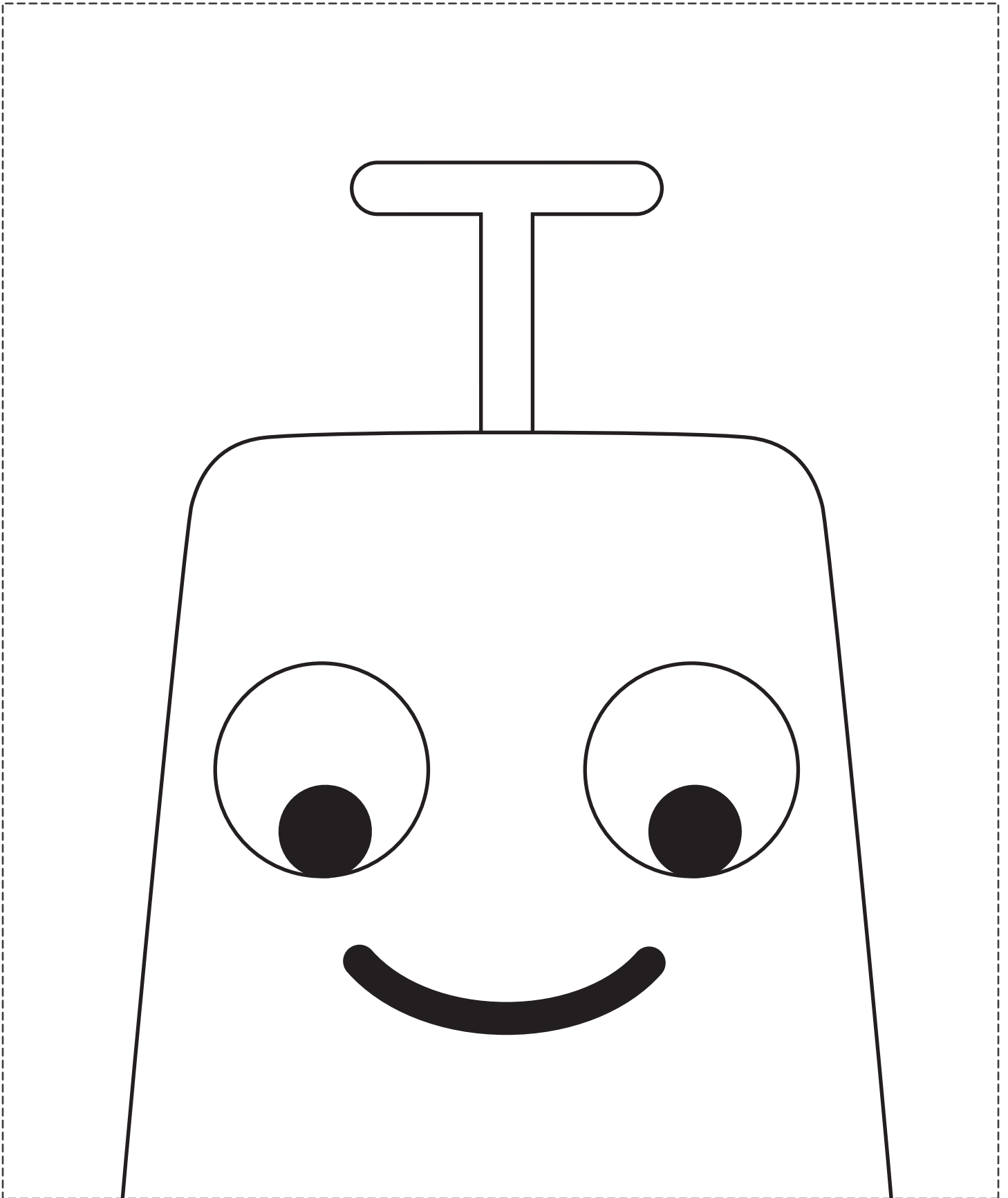
Glue panels onto cardboard and cut them out using a box cutter and ruler. Use packing tape to attach panels together.



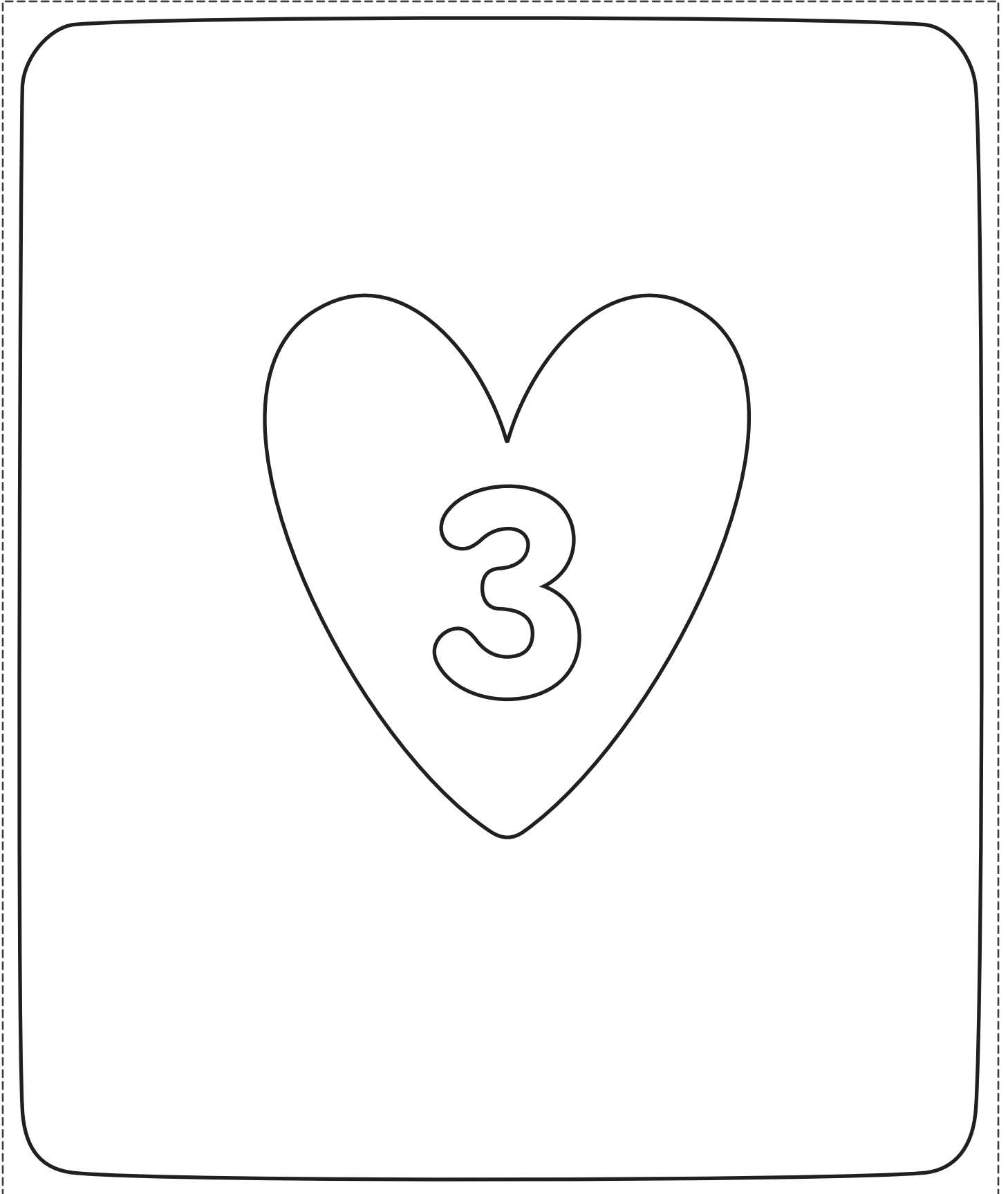
3. Fold laundry like a pro

Place shirt face down and centered onto the board. Fold panels in order: 1, 2, and 3!

HEAD PANEL

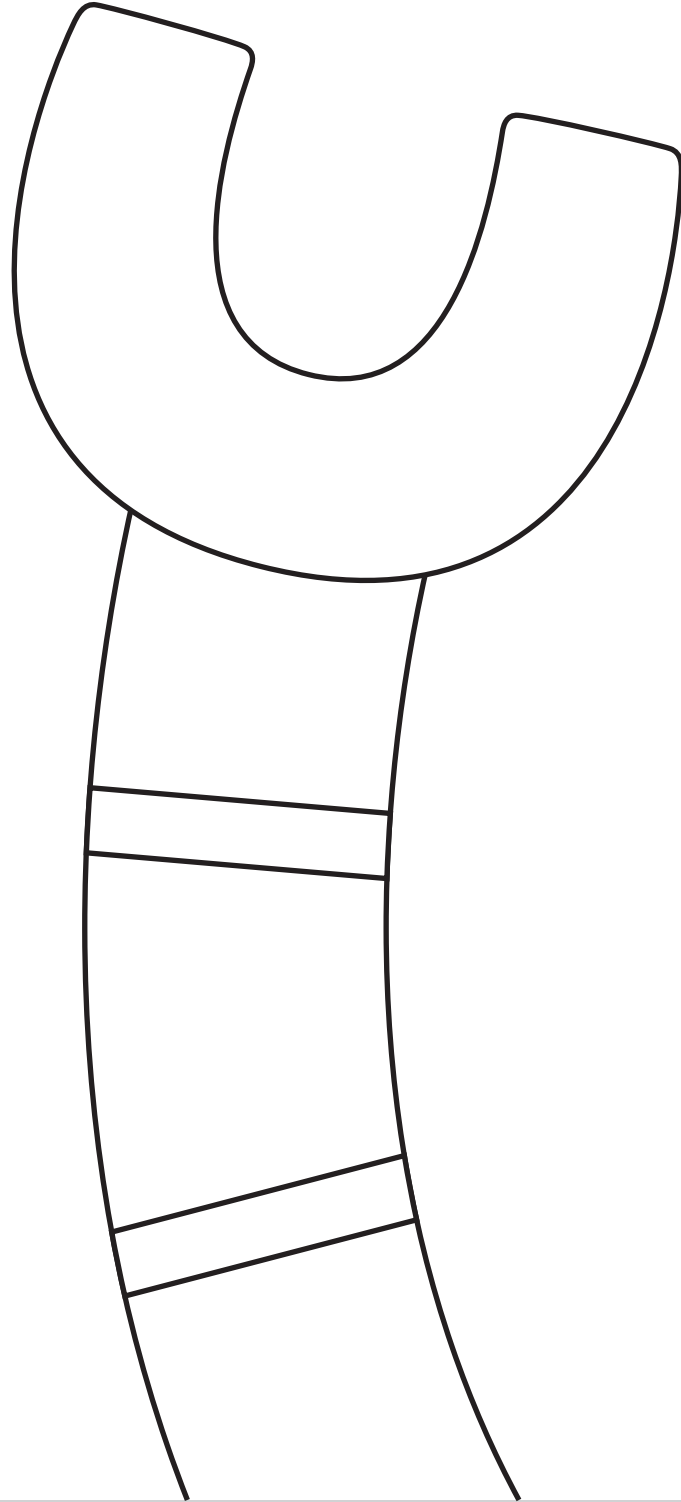


BODY PANEL





ARM PANEL #1 - UPPER

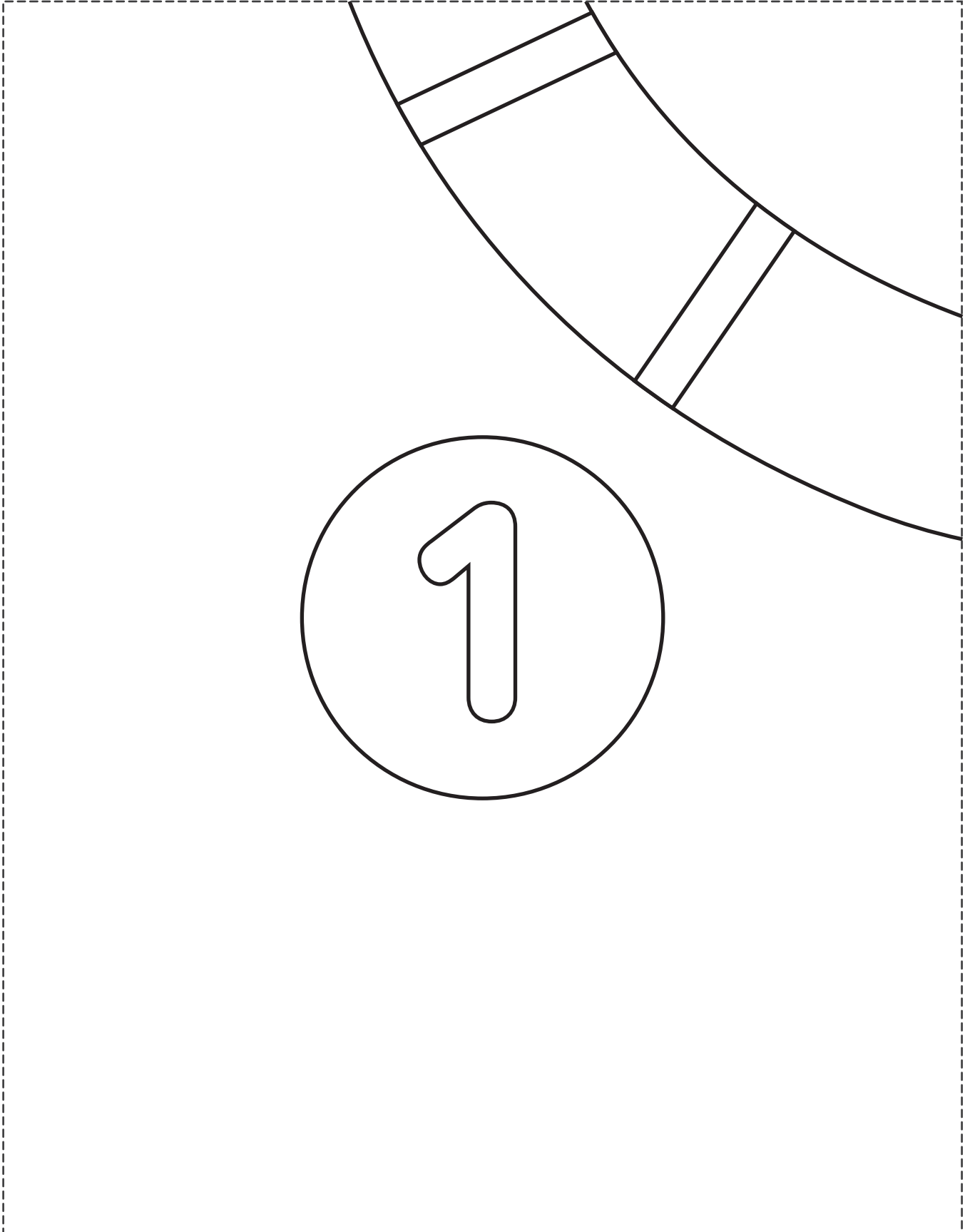


Glue

Glue

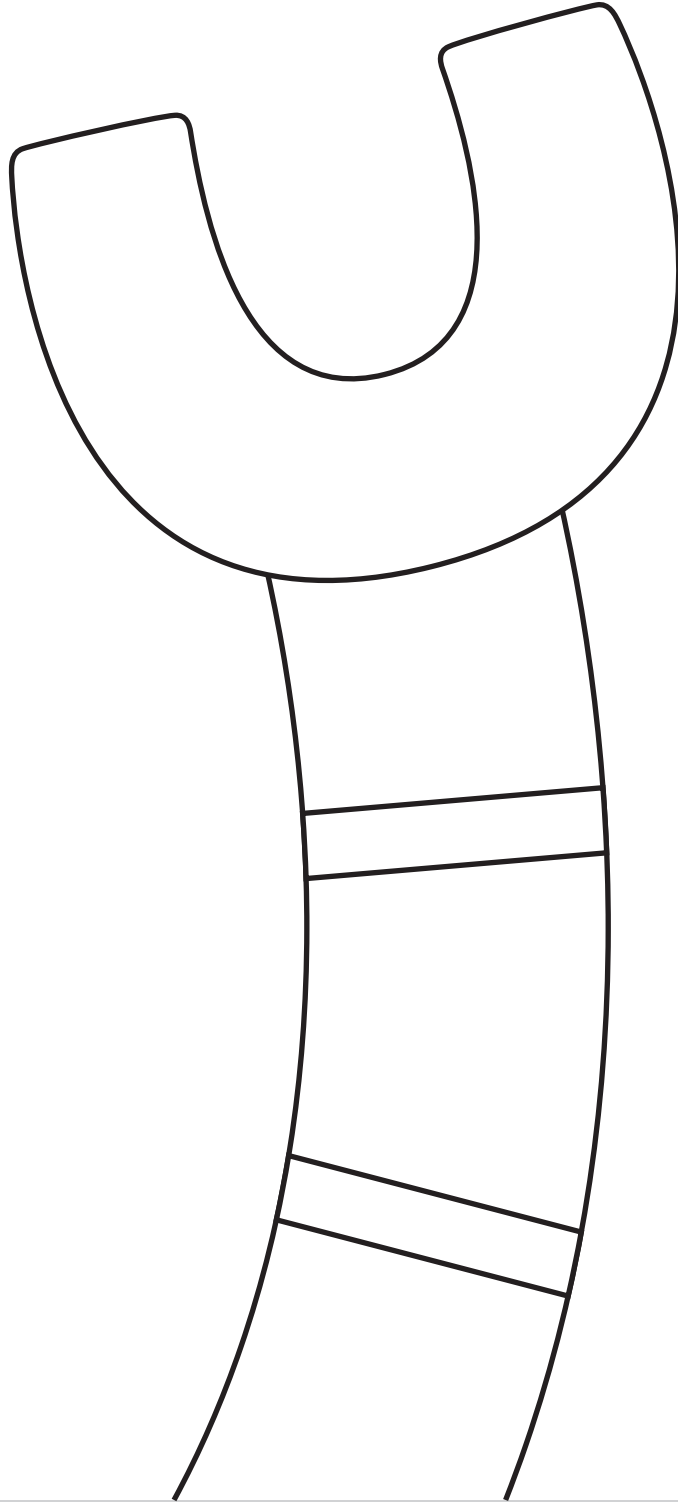
Glue

ARM PANEL #1 - LOWER





ARM PANEL #2 - UPPER

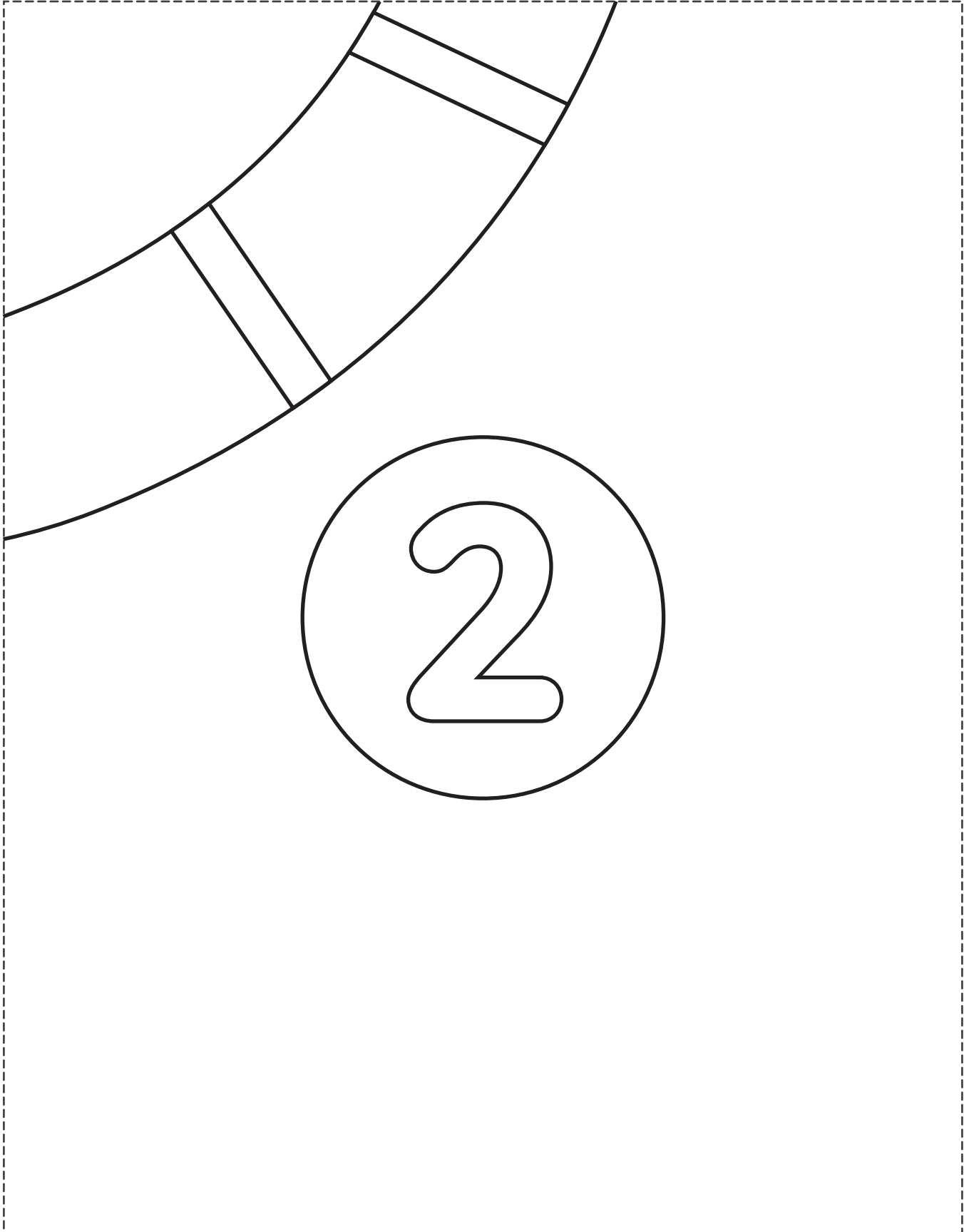


Glue

Glue

Glue

ARM PANEL #2 - LOWER



LEGS

