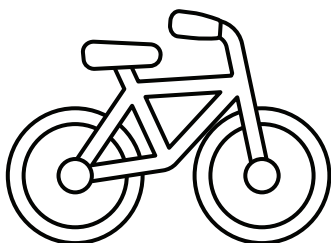


# bikes



## Did you know?

There are more bikes in the world than cars!

## Why can't bicycles stand up on their own?

They're two tired.

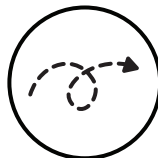
## Quote:

"Nothing compares to the simple pleasure of riding a bike." – John F. Kennedy

## Activities included in this set:

2

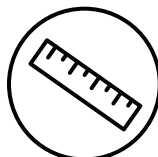
Trace numbers, letters, and circles.



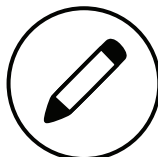
Build fine motor and spatial skills in a maze.



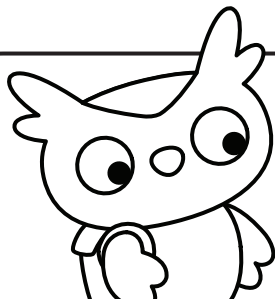
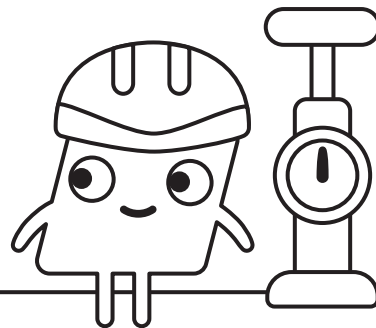
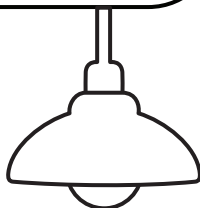
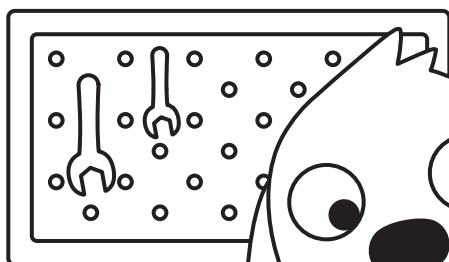
Design a skateboard.



Measure and color bikes.



Write your name on a bike or scooter license plate.



**SAGO mini**  
**school**

## Supplies you'll need:



pencil



crayons



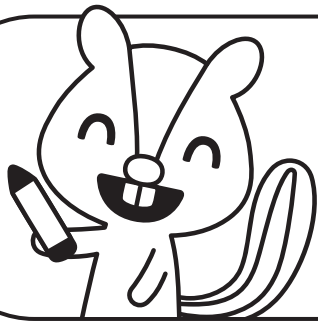
scissors



glue



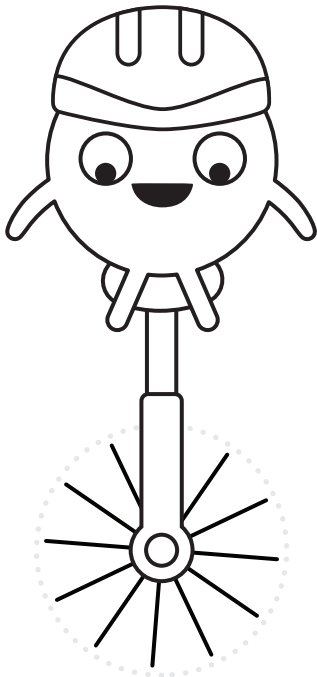
Download **Sago Mini School** on the iOS or Google Play store for more learning games!



**SAGO mini**  
**school**

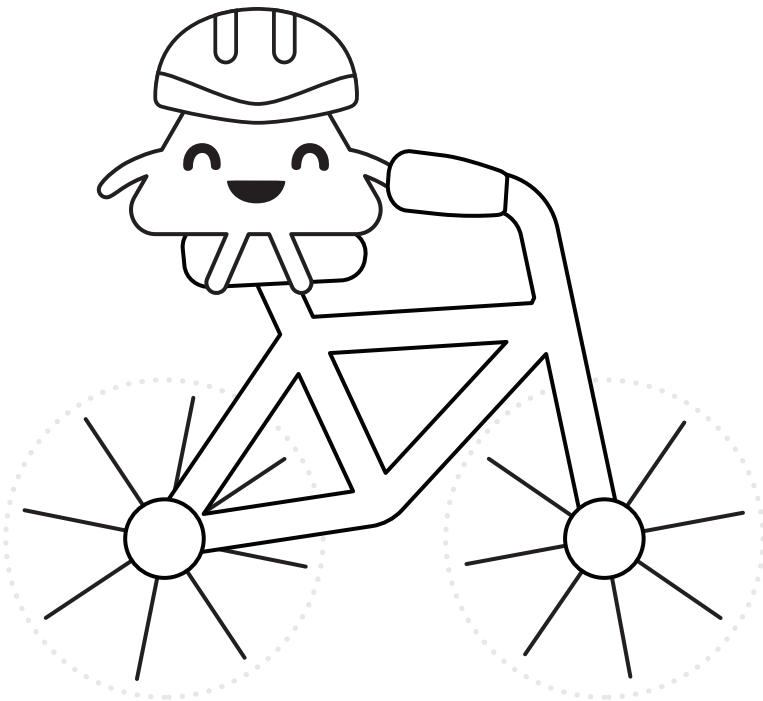
**Instructions:**

Trace the wheels on each object, then count them and trace the number in the box.  
Trace the word to find out what each friend is riding!



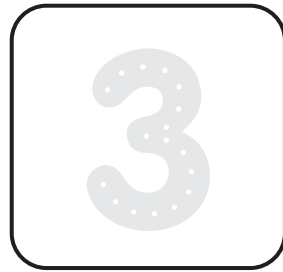
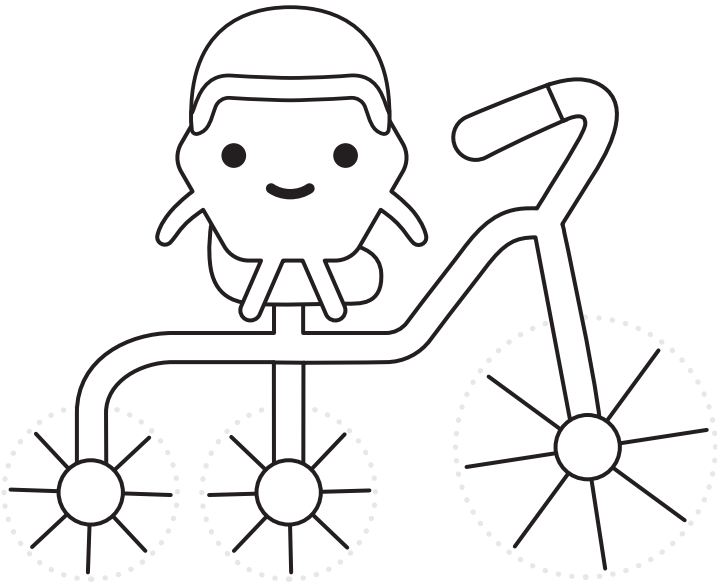
**wheel**

unicycle



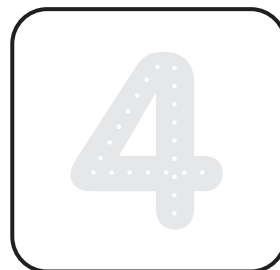
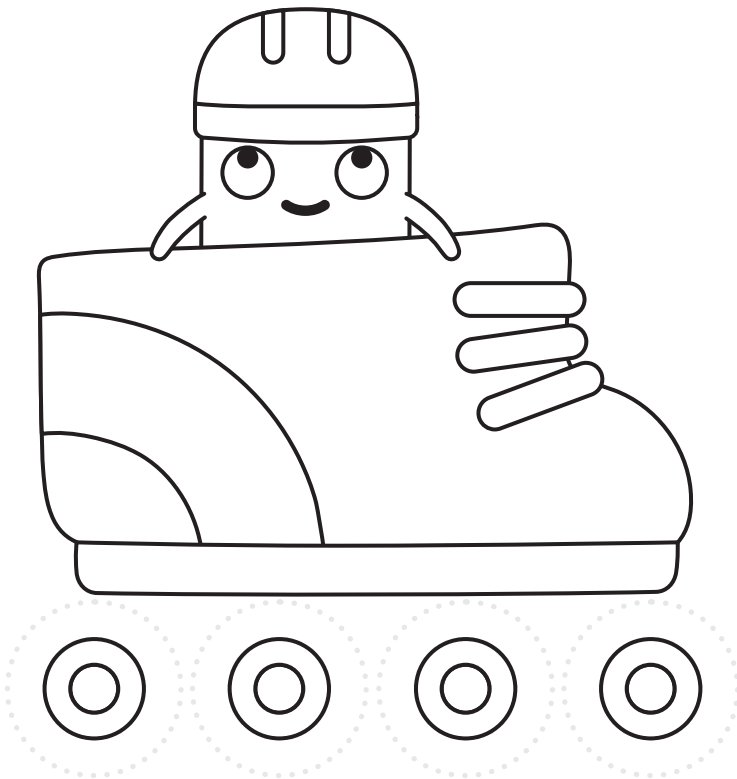
**wheels**

bicycle



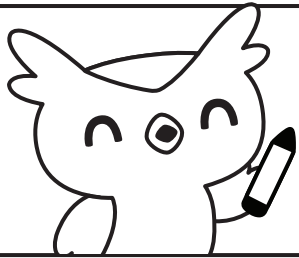
**wheels**

tricycle



**wheels**

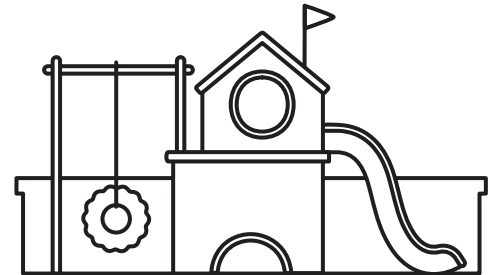
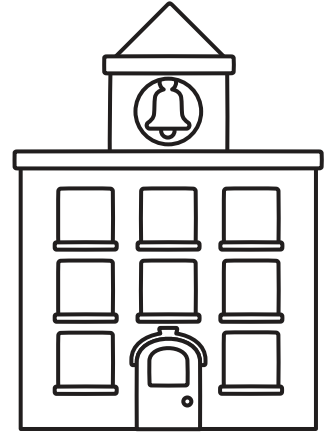
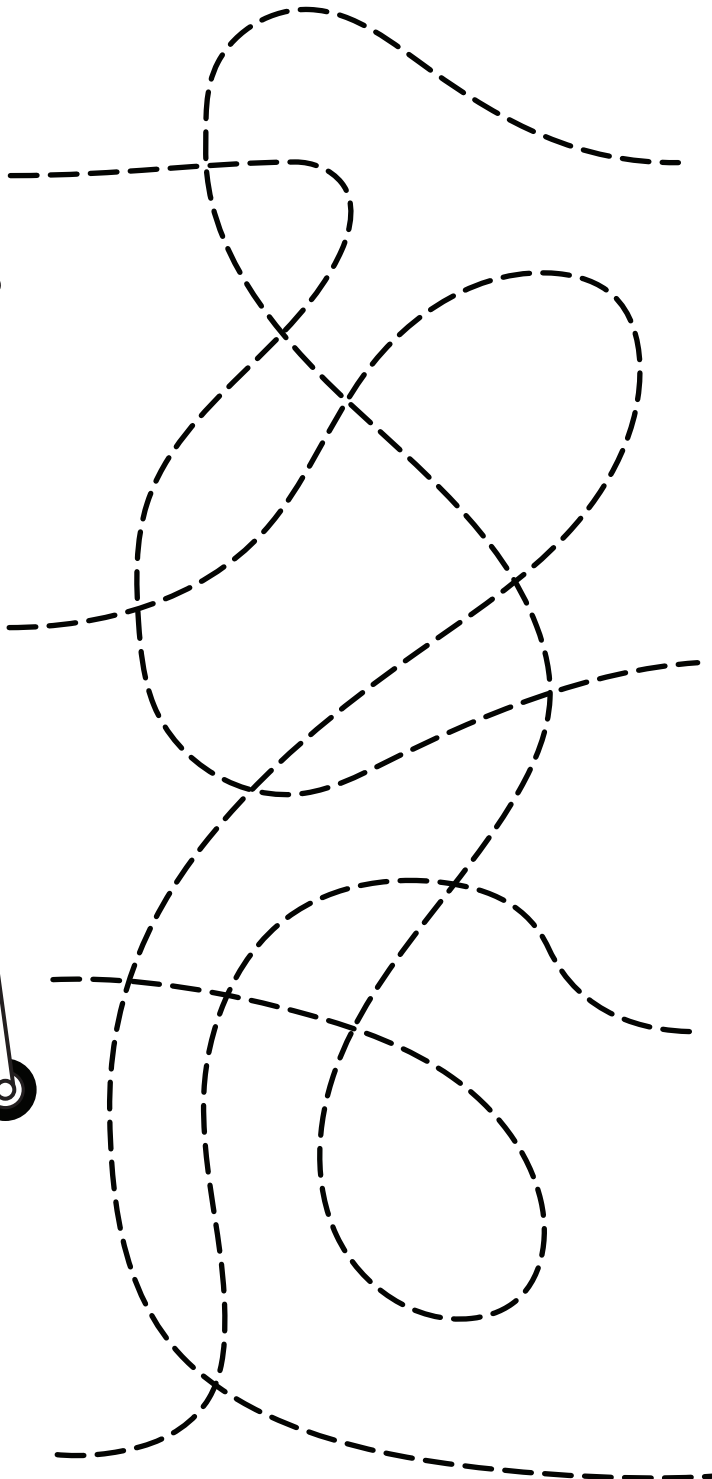
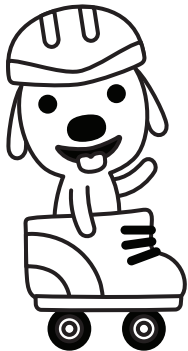
rollerblade

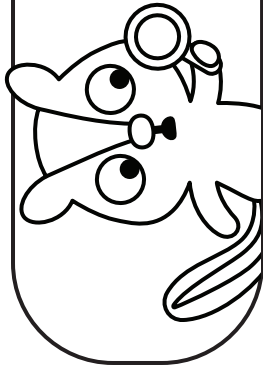


# SAGO mini school

## Instructions:

Trace each path to find out where Jinja, Harvey, Robin, and Jack are going.



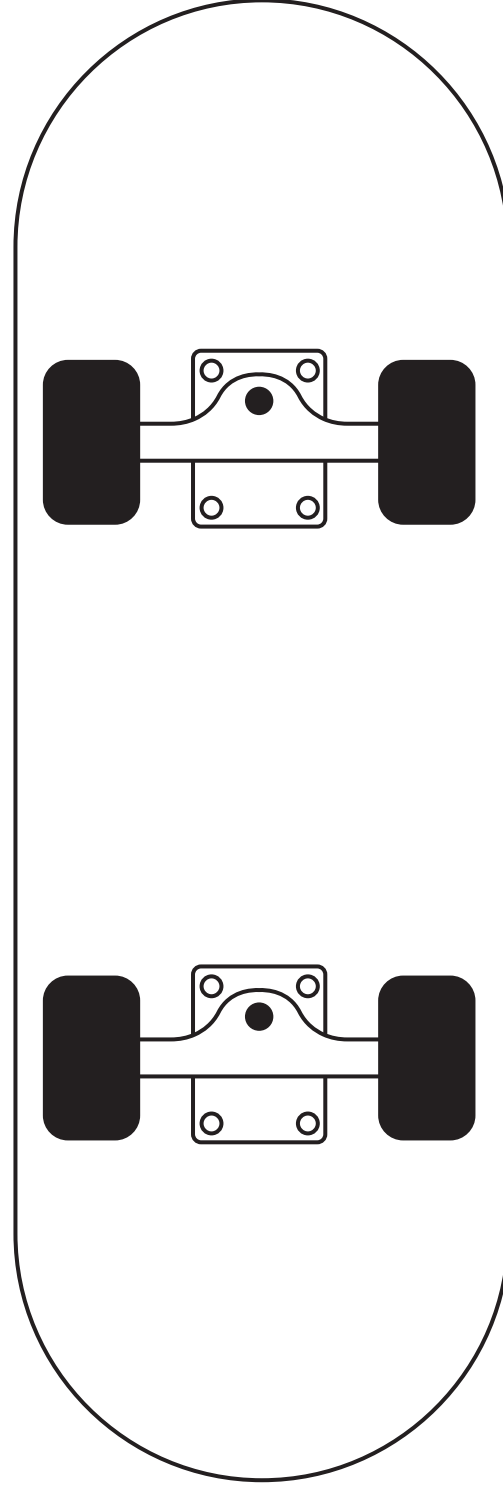
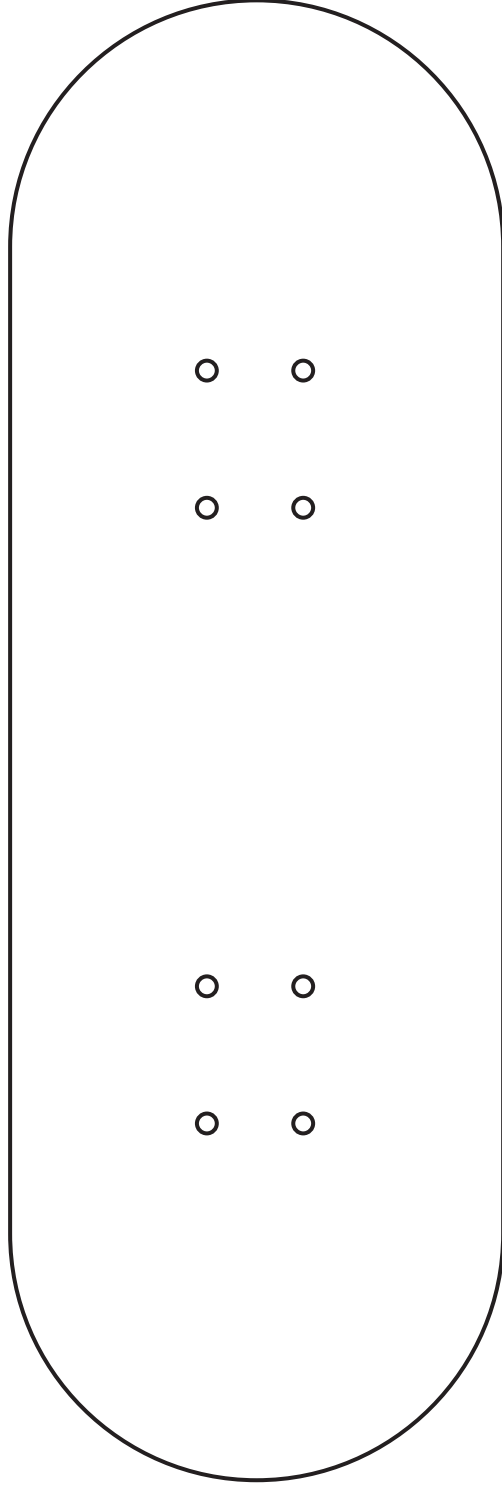


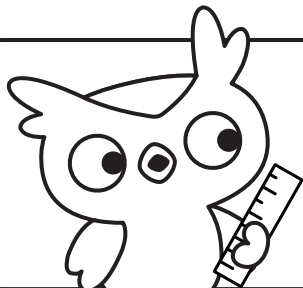
**SAGE mini**

**school**

**Instructions:**

Design and color your  
own skateboard!

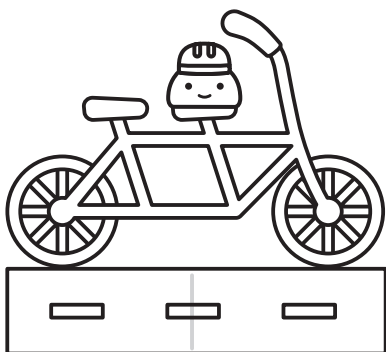
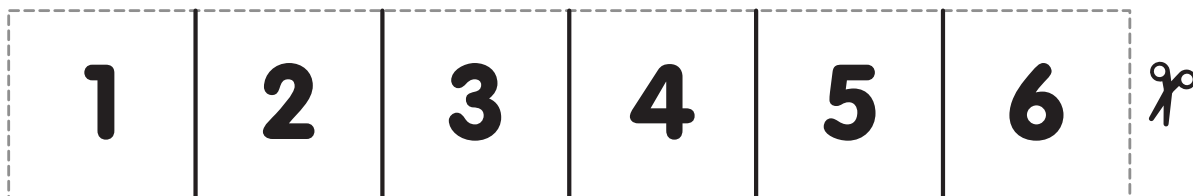




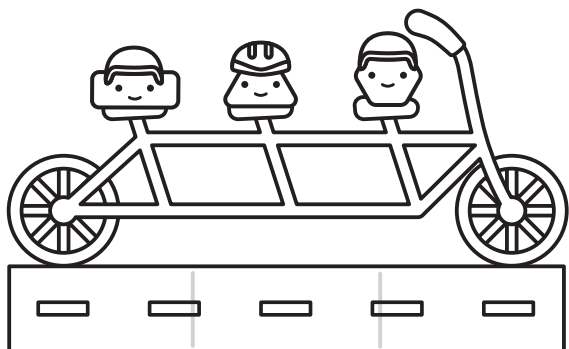
**SAGO mini**  
**school**

**Instructions:**

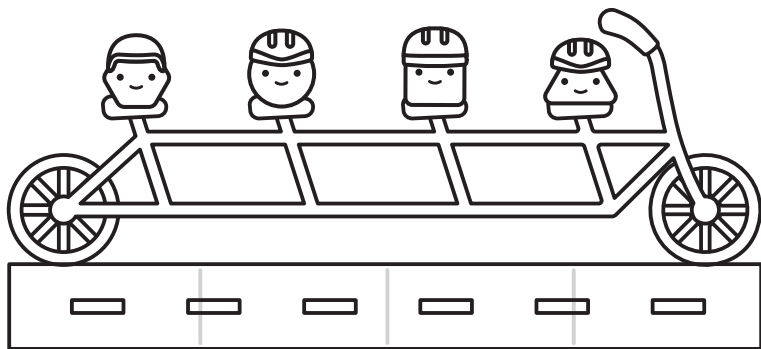
Cut out the ruler and use it to  
measure these long bikes.  
Write the number in the box.



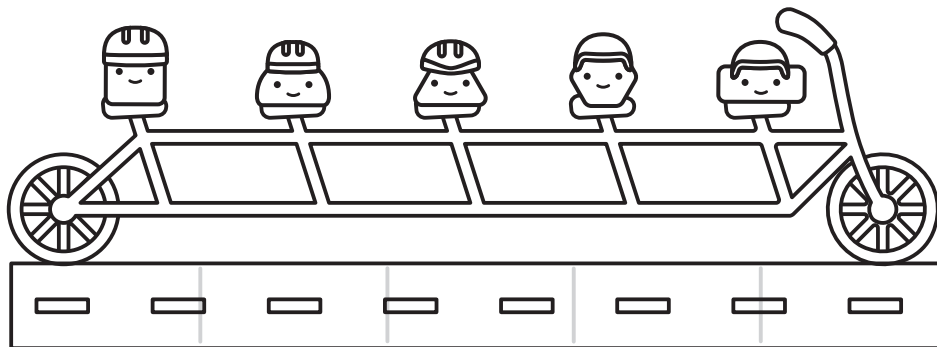
**units**



**units**

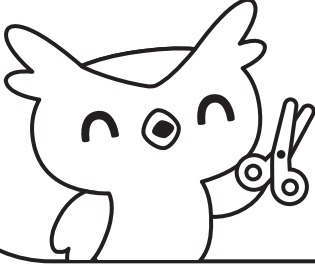


**units**



**units**

# SAGO mini school/



## Instructions

1. Write your name on the license plate and decorate it.
2. Ask a grown-up to cut a piece of cardboard or cereal box that's the same size.
3. Tape or glue the license plate to the cardboard, and have a grown-up punch two holes in the top.
4. With a grown-up, tie the plate to your bike seat or scooter handlebars with string.



SAGO mini

